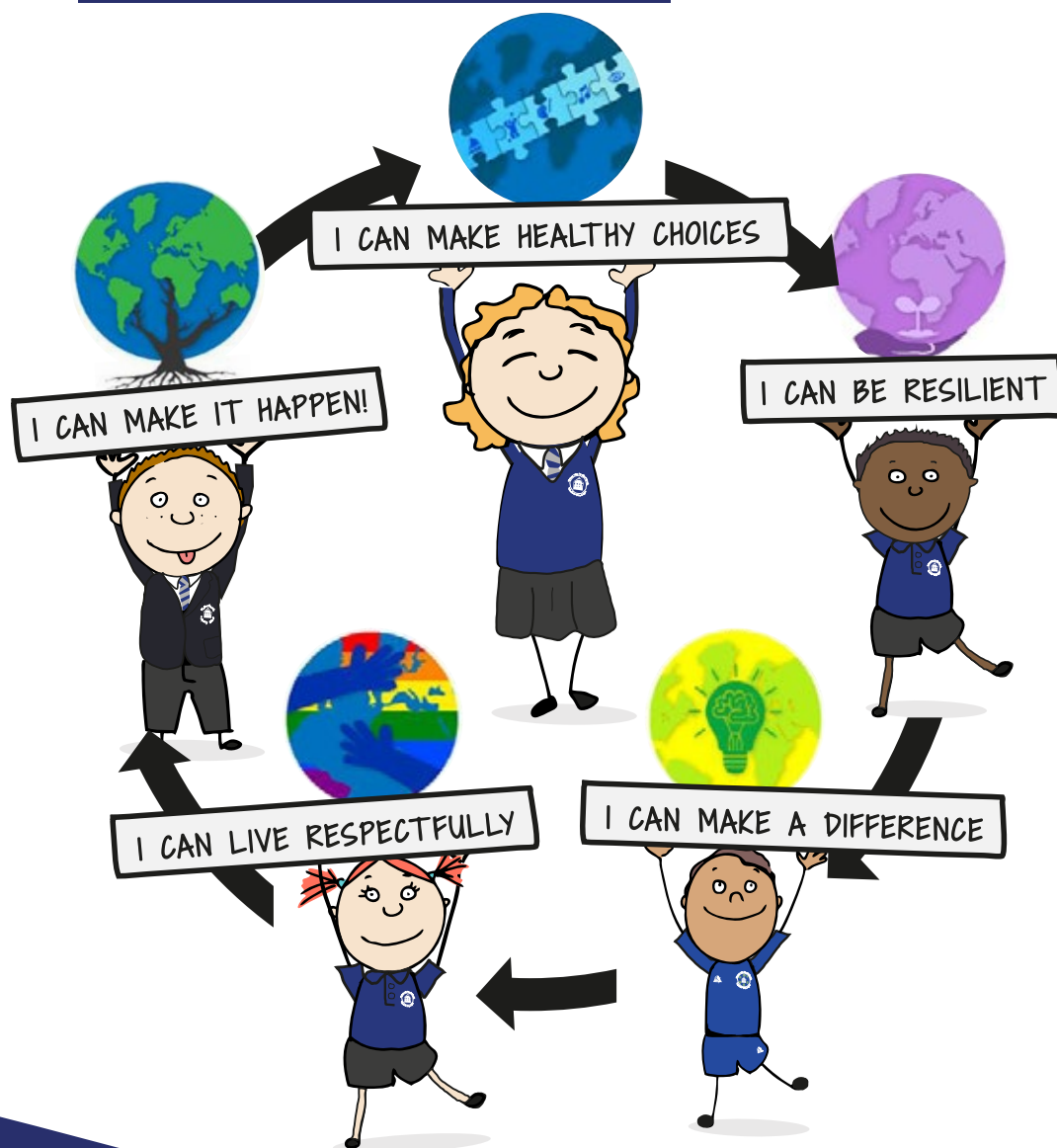


## Our Curriculum Vision



## Welcome

Thank you for choosing Newchurch Primary School. We are excited to meet you in September and show you all of the wonderful aspects of our Early Years Foundation Stage.

In September the Reception class teacher and their team will work hard to create an exciting, playful learning environment for all of their children.

They will create a curriculum and space that is inclusive and supports children of all abilities and ages to play and learn together. We want the children to be happy, independent and confident learners, who are keen to explore, be challenged, be curious, experiment, investigate and discover the world around them.

The children will follow the national EYFS curriculum through a child-led approach. They will focus learning on current topical events and the children's own interests to stimulate their creativity in learning and support them in meeting their early learning goals. There will also be opportunities for the children to participate in educational trips and visits to foster a love of learning outdoors.

The Foundation Stage claims its name and importance from the fact it gives children secure foundations for later learning. Early experiences affect children's attitude to learning so it is vitally important we get it right. All children learn best from experiences that are suitable for their stage of development. Play is the key to the way young children learn. Through play children can develop, for example: the confidence needed for learning; the social skills needed for personal development and the skills needed for reading and writing.

We encourage independence from an early stage to aid problem solving skills. Taking all of this into account, the children will be given the opportunity to learn through a carefully planned, well-balanced curriculum.

If you have any further questions that are not covered in this booklet, please do not hesitate to phone the school on **01983 865210**. In order to help us to make your child's transition from home to school as smooth as possible, we would be grateful if you would read the information contained in this brochure.

## Thank you

# KEEPING CHILDREN SAFE

## How will the school keep my child safe?

Keeping children safe relies on safe premises, safe people and safe policies and practices. There will always be a Designated Safeguarding Lead in the school with a high level of expertise in safeguarding and child protection. All staff are appropriately trained and recognise that keeping children safe is their primary responsibility. We have fully qualified first aiders across the school and most of the Early Years staff have received paediatric first aid training.

## How will you use images of my child?

There will be occasions when we may take photographs of the children at our school or be requested by the media to submit photos. You will be asked to provide consent as to how you would like these images to be used. We appreciate that some families may not wish their child to appear on social media and we will respect these wishes and ask our community to do the same. Consent can be changed at **anytime**.

## Will you share my personal information?

As your child joins our school we will start to hold a lot of information concerning your family. In accordance with GDPR protocols we will keep this safe and secure and will only share with third parties in the event of safeguarding concerns or criminal proceedings. You will be asked to sign to confirm that you understand these principles.



# TEACHING AND LEARNING

## What will my child be learning in their first year at school?

The children will spend a large part of their day in continuous provision, during which they will be able to access a wide range of activities both inside and outside which will be predominantly led by their own interests. The EYFS environment has been carefully set up to encourage independence and self-selection of open-ended resources that include real objects and loose parts. This enables the children to use their creativity when playing and gives them the opportunity to reflect and adapt their play to suit their needs and interests.

Real tools will be on offer in the woodwork area as well as the snack table, home corner and digging area outside. The children will be taught health and safety rules which will allow them to manage 'risky play' in a safe environment. The children will be encouraged to help themselves before asking for help from others, thus giving them the foundations to become resilient independent learners, as they progress throughout the school. Phonics, reading and Maths are taught daily through short focus sessions. The children then have the opportunity to further embed these skills in continuous provision throughout the day.

## What will my child need to bring to school?

Children will be expected to bring their school bag into school daily which should contain their reading book and reading journal. There is no need to bring pencil cases or other items from home as it will all be available in class during continuous provision. PE kits should be worn to school on allocated PE days. A named reusable water bottle should be brought in daily which can be refilled at our water stations. All items that came from home and all uniform items need to be clearly named please to ensure safe return if they are lost.



# SCHOOL HOLIDAYS

## When are school holidays?

We always publish our calendar dates on our school website. In addition to the holidays the school can take 5 INSET days which are used to ensure that the teachers receive additional training to provide the best educational experiences for your child. We publish these dates as soon as we are able. The calendar for academic year 2023/2024 can be found here.

## Bank and Public Holidays 2023/2024

Christmas Day **25 December 2023**

Boxing Day **26 December 2023**

New Year's Day Holiday **1 January 2024**

Good Friday **29 March 2024**

Easter Monday **1 April 2024**

May Day Holiday **6 May 2024**

Spring Bank Holiday **27 May 2024**

Summer Bank Holiday **26 August 2024**

\* First day after break

# Last day before break



School Holidays



Bank Holidays  
and National  
Holidays

**Autumn Term 2023** starts on Friday 1 September 2023 and ends on Tuesday 19 December 2023 (Half term from Monday 23 October to Friday 3 November 2023)

**Spring Term 2023** starts on Tuesday 2 January 2024 and ends on Thursday 28 March 2024 (Half term from Monday 12 February to Friday 16 February 2023)

**Summer Term 2023** starts on Monday 15 April 2024 and ends on Friday 26 July 2024 (Half term from Monday 27 May to Friday 31 May 2024)



### SEPTEMBER 2023

M	28	4	11	18	25
T	29	5	12	19	26
W	30	6	13	20	27
T	31	7	14	21	28
F	1	8	15	22	29
S	2	9	16	23	30
S	3	10	17	24	

### OCTOBER 2023

M	2	9	16	23	30
T	3	10	17	24	31
W	4	11	18	25	
T	5	12	19	26	
F	6	13	20	27	
S	7	14	21	28	
S	1	8	15	22	29

### NOVEMBER 2023

M	6	13	20	27	
T	7	14	21	28	
W	1	8	15	22	29
T	2	9	16	23	30
F	3	10	17	24	
S	4	11	18	25	
S	5	12	19	26	

### DECEMBER 2023

M	4	11	18	25	
T	5	12	19	26	
W	6	13	20	27	
T	7	14	21	28	
F	1	8	15	22	29
S	2	9	16	23	30
S	3	10	17	24	31

### JANUARY 2024

M	1	8	15	22	29
T	2	9	16	23	30
W	3	10	17	24	31
T	4	11	18	25	
F	5	12	19	26	
S	6	13	20	27	
S	7	14	21	28	

### FEBRUARY 2024

M	5	12	19	26	
T	6	13	20	27	
W	7	14	21	28	
T	1	8	15	22	29
F	2	9	16	23	
S	3	10	17	24	
S	4	11	18	25	

### MARCH 2024

M	4	11	18	25	
T	5	12	19	26	
W	6	13	20	27	
T	7	14	21	28	
F	1	8	15	22	29
S	2	9	16	23	30
S	3	10	17	24	31

### APRIL 2024

M	1	8	15	22	29
T	2	9	16	23	30
W	3	10	17	24	
T	4	11	18	25	
F	5	12	19	26	
S	6	13	20	27	
S	7	14	21	28	

### MAY 2024

M	6	13	20	27	
T	7	14	21	28	
W	1	8	15	22	29
T	2	9	16	23	30
F	3	10	17	24	31
S	4	11	18	25	
S	5	12	19	26	

### JUNE 2024

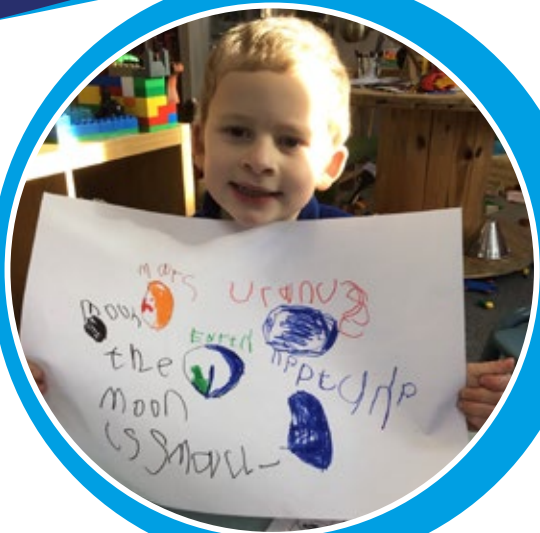
M	3	10	17	24	
T	4	11	18	25	
W	5	12	19	26	
T	6	13	20	27	
F	7	14	21	28	
S	1	8	15	22	29
S	2	9	16	23	30

### JULY 2024

M	1	8	15	22	29
T	2	9	16	23	30
W	3	10	17	24	31
T	4	11	18	25	
F	5	12	19	26	
S	6	13	20	27	
S	7	14	21	28	

### AUGUST 2024

M	5	12	19	26	
T	6	13	20	27	
W	7	14	21	28	
T	1	8	15	22	29
F	2	9	16	23	30
S	3	10	17	24	31
S	4	11	18	25	



## How will my child be assessed in their first year at school?

Children will be assessed first and foremost using our observation system linked to SeeSaw, our online journal. At present, children will also take part in a baseline assessment within the first 6 weeks. This includes fun 'hands-on' activities to determine the children's starting points in Maths and English.

## What if I am worried that my child may have additional learning needs?

Please talk to us if you feel your child has additional learning needs. If we need to discuss this further, we will talk to our SEND team for further advice and strategies.

## Will my child have access to online technology?

Yes. We think it is important that children have access to technology from the very beginning of their education. They will have access to ipads to use for research purposes as well as some online learning portals. The children will also have the use of a large interactive whiteboard that allows them to explore using drawings, writing alongside learning games and visual images. We do have robust safety systems in place to protect children whilst online in school. We do ask that all new parents participate in a compulsory safety session prior to their children accessing the technology and this invitation will be sent to you directly. Feedback from previous attendees suggests that this session is invaluable in raising awareness.

## Will my child be going on school visits during their Reception year?

Yes definitely! Children will have the opportunity to visit locations that enrich their curriculum focus. You will be sent a consent form to authorise that you are happy for your child to participate in such activities throughout the year. Unfortunately, without the necessary consent your child will not be able to participate, even in a simple walk around the immediate locality and so please sign and return the form to us.

## Can my child take part in any extra curricular activities?

We operate an extensive range of after school clubs. These are accessible to children in Reception class at the start of the Spring Term. We find that our little learners are too tired to join in clubs when they first start school. Clubs are charged at £2 per week, they run for the duration of 10 weeks each term and are paid for via our School Money cashless payment system. A breakfast club is in operation daily and CoolKidz childcare also will be available until 5pm daily.



# SCHOOL MEALS AND DRINKS



## Does the school provide a hot meal for my child?

Currently the Government operates a Universal Free School Meal system for any child in either Reception Class, Year 1 or Year 2. This entitles your child to a free hot meal every day. Meals are served to the children at the table and good manners are promoted as part of our 'Dining Experience'. We have a fabulous chef to cook our meals on site. The menu is shared on our website and every week in the school newsletter.

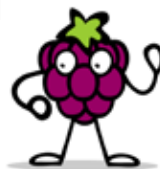
Some families may be entitled to additional benefits and we would encourage you to complete the Pupil Premium Registration Form if you are eligible as this will enable your child to have access to more financial support throughout their time in school.

## Can I provide a packed lunch for my child?

We encourage children to bring a healthy lunch to school which could include items such as fruit, vegetables, pasta or rice salads, yoghurts.

We ask that children do not bring nuts to school as some children in school have allergies. Sweet products are also discouraged.

A snack table is also available in the classroom and the children are permitted to have a drink of water or milk and a healthy snack should they become hungry or thirsty during their day.



## How long do the children get to eat lunch?

We operate a staggered lunchtime and children in Reception Class and KS1 have 40 minutes to eat their lunch and enjoy playing with their friends. We appreciate that it takes a little while to get into this routine and so lunchtimes are a little longer when the children first join school.



## Does the school offer milk?

Parents are asked to subscribe School Milk, a free and subsidised scheme. You can register at [www.coolmilk.com](http://www.coolmilk.com). This will ensure that we have a plentiful supply for our snack table all year round. There is no need to pay for milk once your child turns 5 years old as we will ensure that there is always enough milk to go around.

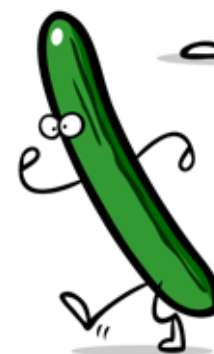


## Will my child need a water bottle?

We strongly encourage all children to have their own refillable water bottle. Please ensure this is named and is in school on a daily basis. Children are at greater risk of dehydration than adults and so we will ensure that we give timely reminders for your children to have drinks throughout their day.

## It is my child's birthday, can I send in sweet treats?

Whilst this is a lovely idea we are a healthy school so would prefer that the sweets and treats are left for the celebrations at home please.



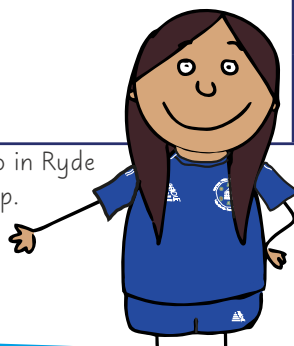
# SCHOOL UNIFORM

## What does my child need to wear to school?

It is our preference that our children wear the following to school, we have very few items with a personalised logo in order to make the uniform as affordable as possible for parents. As learning is play based in early years please make sensible, practical choices for your child.

SCHOOL UNIFORM	PE KIT - WITH NEWCHURCH LOGO
Royal blue polo shirt with school logo	Royal blue PE shirt
Royal blue v necked jumper or cardigan with school logo	Royal blue PE Shorts
Grey trousers	Royal blue hoody , Tracksuit bottoms (optional for winter months)
Grey knee length skirt	Trainers
Optional grey shorts	
Optional blue gingham dress	All items are available from Pendle on <a href="http://newchurch-primary-school.footballkit.co.uk">http://newchurch-primary-school.footballkit.co.uk</a> The company will add initials which is advised to avoid lost property. Please see website for size guide and information on garments.
Grey, black or white socks or grey tights	
Black sensible school shoes, not trainers or fashion style	
Simple hair ties – no fancy bows or head bands please and only school colours.	
A pair of welly boots (any colour) to keep in school	

All items with the school logo can be purchased from Kids and Co in Ryde all other items can be purchased from wherever you prefer to shop.



## Can my child wear jewellery in school?

We ask that pupils do not wear jewellery in school apart from a simple watch to aid their telling of time. Small stud earrings can be worn but these must be removed by pupils on PE days. If your child cannot remove their own earrings we ask that they do not wear them.

Schools are busy places and we find that jewellery can cause unnecessary accidents.



## HEALTH ISSUES



### What do I do if my child has prescribed medication?

If your child needs to have medication at school you must complete a form at the school office. We ask that medication at school is kept to a minimum and if antibiotics are prescribed for less than four times a day we suggest this can be organised out of school time.

Please note that staff will only administer prescribed medication and not over the counter remedies. All medication held on school premises is kept locked and secure.

### What happens if my child has a medical/dental appointment?

We ask that you please try to arrange medical appointments outside of school time to avoid interrupting learning. If this is unavoidable we ask that you bring the appointment letter to the school office so it can be recorded on the register.

### What happens if my child has an accident at school?

We have staff trained in paediatric first aid on site who can offer reassurance and first aid to pupils who are injured at school.

If the injury is significant we will always inform parents and advise of how we will proceed.

### What if my child has a long term or chronic medical condition?

Please talk to us if your child has a chronic or long term illness. We will always aim to support your child and are able to create individual health care plans in conjunction with parents for children requiring specialist support or intervention. Serious allergies, diabetes and asthma related conditions will also be supported by an appropriate plan.

## PARENT COMMUNICATION

### How do you communicate with Parents?

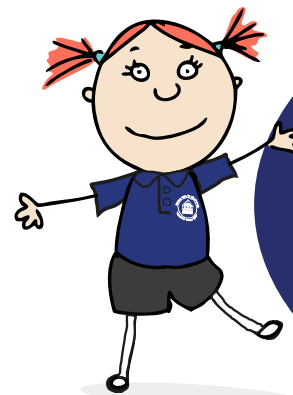
We pride ourselves on our open door policy and welcome the views of parents. We use several forms of communication including; a text messaging service, emails, a weekly newsletter, updates through SeeSaw blogs on the school website and our dedicated school Facebook page. It is important that parents keep the school updated of any changes to contact details to facilitate this communication.

We also operate a Parent Forum to act as a critical friend to proposed aspects of school improvement. You would be very welcome to join this forum.

Mentoring Days are held three times a year and this is your opportunity to discuss the progress, effort and attainment of your child to date. If you have any immediate concerns please contact the school office who will be happy to assist.

### What do I do if I need to see my child's teacher?

Quick communications can take place at drop off or pick up times. If a more lengthy meeting is required please contact the school office who will be happy to coordinate a convenient time for both parties.



## How can parents get involved?

We welcome parental involvement in their child's education. We ask that you support reading at home by sharing a story for at least 10 minutes every day and sign our reading pledge.

You will also be asked to engage with the SeeSaw Online Learning Journal for your child which will give you access to photos, observations and comments relating to their learning experiences in school.

Our Friends Association (FONS) also welcome volunteers as they actively promote fundraising opportunities for our school. You don't have to do anything amazing but it would be amazing if you could do something to contribute as we really could not do without the additional monies raised by this fabulous team!

## What do I do if I need to make a complaint?

Whilst we never set out to upset anybody there may be times when you feel you need to make a complaint. Please see the Federation Complaints Policy for how to do this. Please refrain from using social media to share any concerns you may have. We would always rather talk things through with you if we can and together we can hopefully resolve matters and keep everyone smiling.



# ATTENDANCE AND TIMEKEEPING

## What are the school opening and closing times?

To ease congestion in the village we operate a staggered start in the mornings and the children are encouraged to arrive promptly at 8.30 - 8.40am window.

Upon arrival they will be met at the grey gate by a member of staff. All children will be ready to pick up from 3.00 - 3.10pm window each day from the playground by EYFS outside area.

We offer a breakfast club provision from 8.00am to assist working parents who may require an earlier start. We also provide additional childcare via our 'Cool Kidz' club with an extended day until 5pm (Mon-Thurs) to support our working families.

## What do I do if my child is late to school?

If you are aware that you are running late, please ring ahead to inform us to prevent us worrying about you. Upon arrival to school please escort your child to the main school office whereby a member of the admin team can sign them in. Be sure to tell us at this time if your child requires a school meal. We will ensure your child safely gets to their classroom to enjoy the rest of their day.

## What do I do if I am going to be late in collecting my child?

There are times when parents are late collecting their child from school, if this is going to happen we ask that school is kept informed and the expected delay is given.

If a child is not collected and no reason is given we will place them in an after school club for which a charge will be added.

If a child is still not collected, we will follow our Late Collection of Child Policy a copy of which can be found on our school website.



# ATTENDANCE AND TIMEKEEPING

## Can I send someone else to pick up my child?

Keeping children safe is our priority and we will only hand a child over to a person who has been added to an approved list by the parent. Should collection arrangements change please contact the school office to inform us at the earliest opportunity.

## How do I know if my child should stay home from school?

As a parent you are the best person to know if your child is well enough to go to school and is able to learn. Should your child wake up with a cough, cold or headache our medical advice is to give them paracetamol (calpol etc) and send them to school. We will always contact you if your child's condition worsens or if we believe it is contagious such as chicken pox, vomiting etc.

To prevent spread of infection if your child experiences diarrhoea or vomiting we ask that they do not attend school for 24 hours after the last episode, and if your child suffers with both symptoms then we ask that your child remains at home for 48hrs.

## How do I report my child's absence from school?

We would prefer you to notify us as soon as possible on the day of the absence. A message can be left on the school answer machine should no one be available to take your call. All absences are expected to be verified with a written note explaining the reason for the absence upon return to school.



## Can I take my child on holiday in term time?

No. The Governing Body have opted to follow the IOW Local Authority guidance for school attendance and therefore the school is expected not to grant any period of leave during term time unless sufficient evidence to support exceptional circumstances is provided by the parent. The school is obliged to pass on any information regarding term time holidays to the Education and Inclusion team who may wish to take further action including the issuing of Truancy Penalty Notices. Please see our Registration and Attendance Policy on the school website for further information.



# Contact

**Executive Headteacher:** Miss K Howarth BA (QTS), NPQH

**Head of School:** Mrs L Parkin BA (QTS), NPQH

**Co-Chairs of Governors:** Mr M Day and Mr I Watterson

**SENCo:** Mrs E Kelly (contact via school main email address)

**Office Administrator:** Miss P Hopper

Newchurch Primary School, School Lane, Newchurch. Isle of Wight. PO36 0NL

**Telephone:** (01983) 865210

**Email:** [office@newchurchprimaryschool.co.uk](mailto:office@newchurchprimaryschool.co.uk)

[www.newchurchprimaryschool.co.uk](http://www.newchurchprimaryschool.co.uk)

